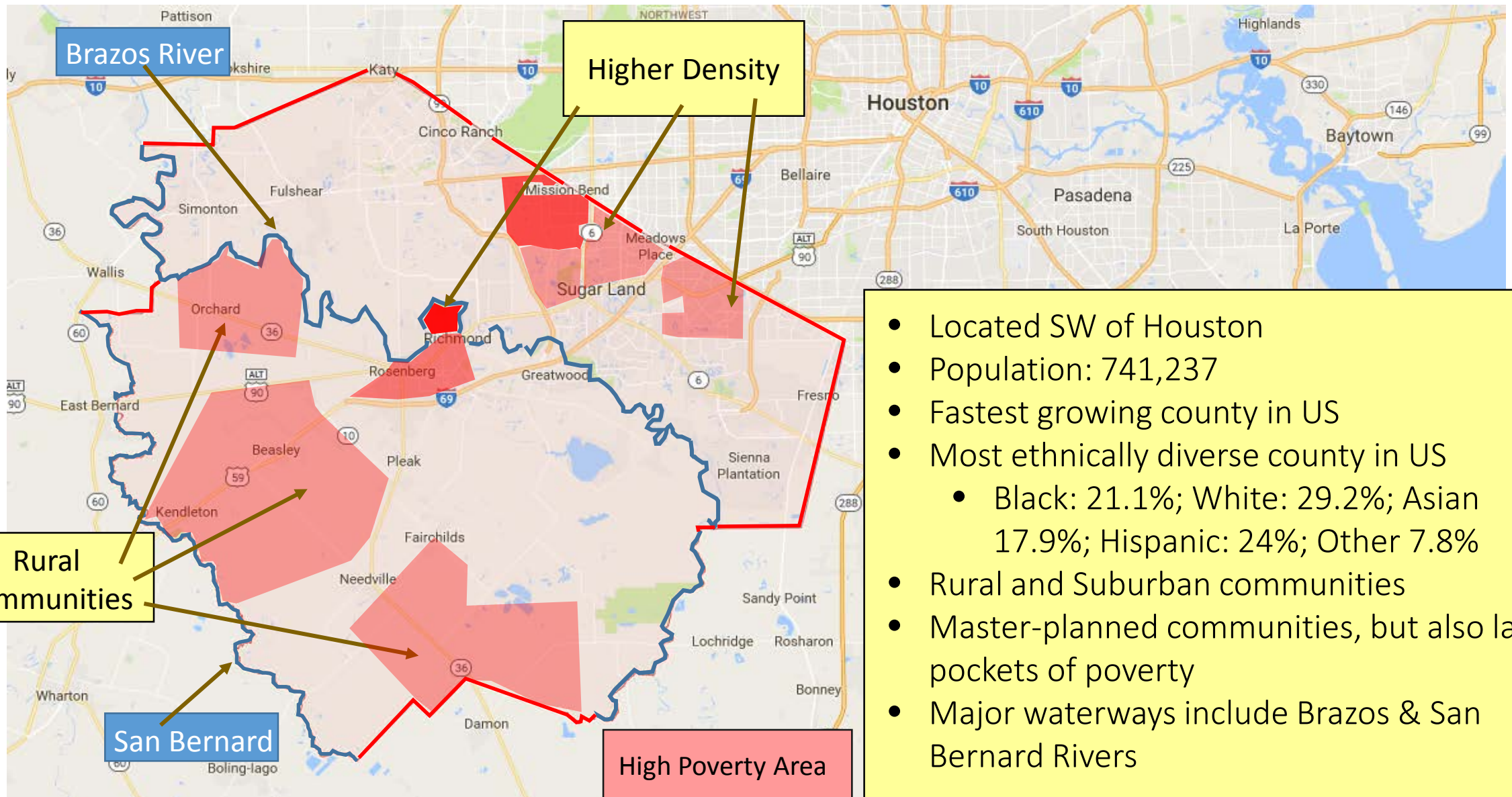


# Fort Bend County Recovery after Hurricane Harvey

---

November 4, 2017

# Fort Bend County, TX



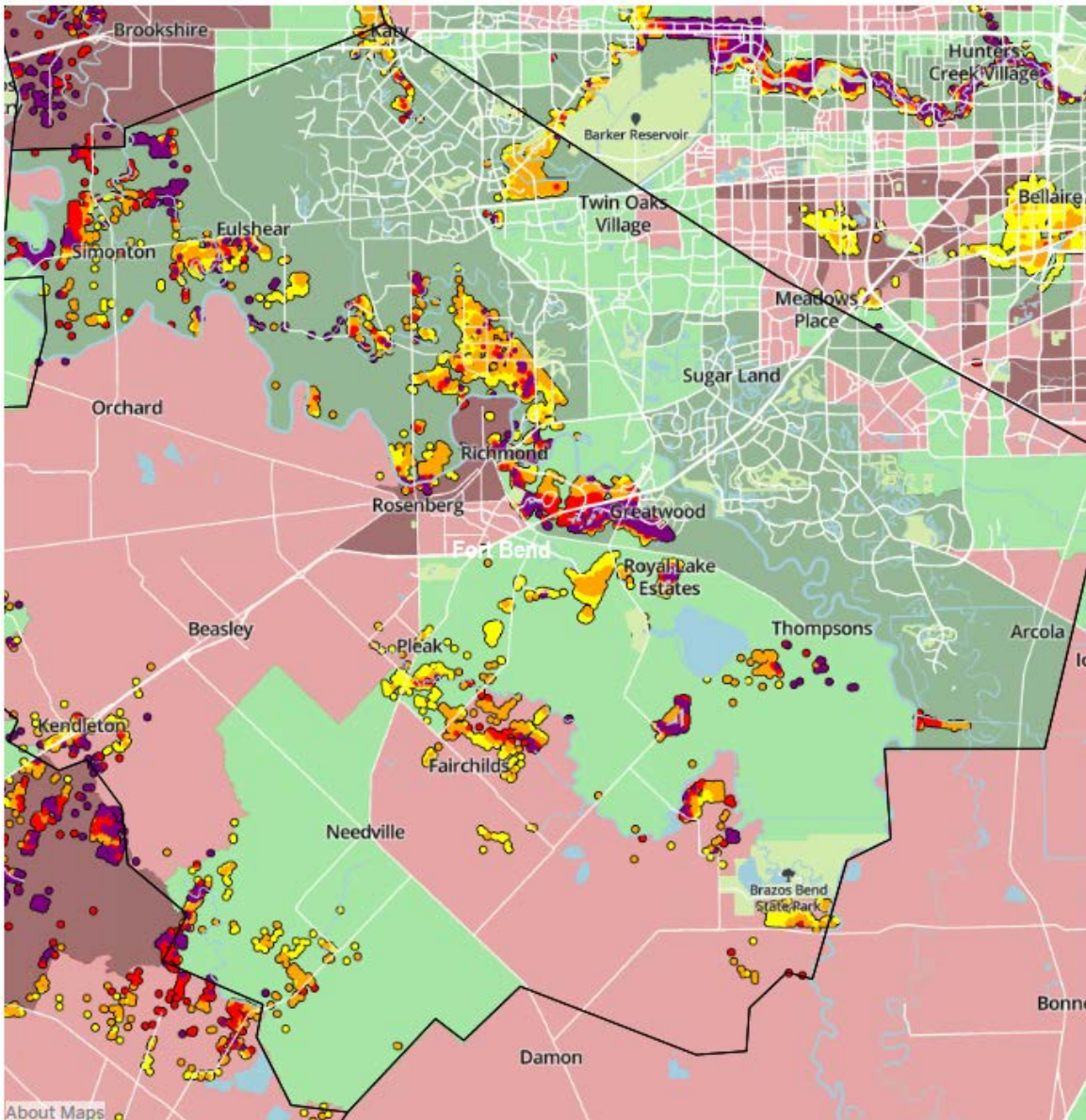
- Located SW of Houston
- Population: 741,237
- Fastest growing county in US
- Most ethnically diverse county in US
  - Black: 21.1%; White: 29.2%; Asian 17.9%; Hispanic: 24%; Other 7.8%
- Rural and Suburban communities
- Master-planned communities, but also large pockets of poverty
- Major waterways include Brazos & San Bernard Rivers

# Harvey Damage Assessment

---

- 40+ inches of rain in less than 72 hours across Fort Bend
- 22% of Fort Bend County flooded
- Over 200,000 residents forced to evacuate (27% of population)
- 5,000 residents sheltered at 29 Facilities
- 10,500 rescues performed
- Over 57,000 FEMA registrations to date
- 7,000+ homes damaged by disaster (reported to date)
  - Rising water, reservoir releases, and wind/tornados
- Four presidentially declared disasters in past three years
  - Some residents have been impacted multiple times

# Harvey Damage & Social Vulnerability



The damage levels are based on preliminary analysis conducted by FEMA, as of 09/02/2017.

Damage Level: **Affected by floods** **Minor damage** **Major damage** **Destroyed**

The map includes an overlay of "Social Vulnerability" - an index of 14 social factors (including poverty, lack of vehicle access, and crowded housing) developed by the CDC to identify communities in need of additional support to prepare for or recover from a disaster.

Low vulnerability High vulnerability

*Note: While the foundation has invested in supporting the most vulnerable populations on the road to recovery, we are mindful that even households not traditionally noted as "vulnerable" have been rendered so following this disaster, particularly if they have already used savings/retirement funds to recover from prior disasters.*

*Source: Episcopal Health Foundation*

# Fort Bend Recovers Network

---

Fort Bend Recovers is a collaborative network comprised of nonprofit, faith-based and government organizations working as long-term recovery partners to assist our community with disaster recovery efforts

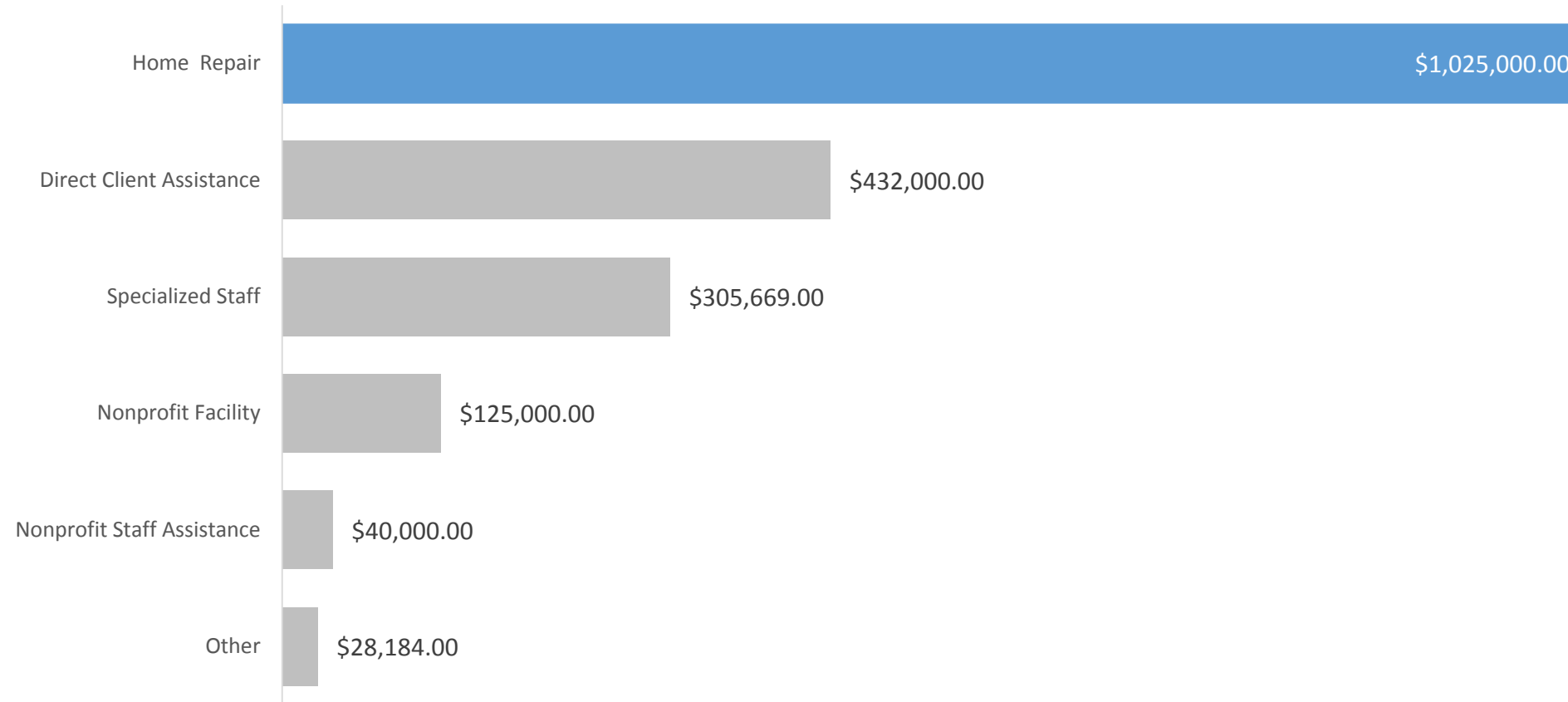
- Originally formed to respond to May 2016 flood event; continuing to work together post-Harvey
- Fort Bend Recovers is NOT an independent organization, but a collaborative network of 60+ stakeholders engaged in LOCAL efforts
- The George Foundation & United Way of Greater Houston are active participants in the network

**FORT BEND RECOVERS** 

# The George Foundation's Response to Harvey (as of Oct.)

- \$1.5M grant to Fort Bend Recovers organizations to support 2016 flood event amended to also serve Harvey victims (United Way serves as fiscal sponsor)
- Streamlined rapid response grant opportunity for immediate needs: 32 grants awarded totaling \$430,853
- Currently evaluating strategy for investing in long-term recovery

A total of \$1,955,853 has been committed, with the largest share of grant funds allocated towards [Home Repair](#).



## Other Support (as of Oct.)

---

- United Way of Greater Houston
  - >\$5.6M in grants to local organizations for case management, basic needs & systems support (across 4-county region, not exclusively Fort Bend County).
- Additionally
  - Other private entities have granted \$2.5M to Fort Bend area nonprofits and churches.
  - Local Chambers of Commerce have collaborated to launch a community fund focused on corporate and individual donors
    - Proceeds (currently at \$64K) will benefit Fort Bend Recovers' members providing recovery assistance.

# Foundation Grantees Active in Recovery

---

## Case Management

Attack Poverty  
Baker Ripley  
Catholic Charities  
Family Hope  
Family Houston  
Fort Bend County  
Social Services  
Katy Christian  
Ministries

## Basic Needs/Financial Assistance

Catholic Charities  
East Fort Bend Human  
Needs Ministry  
Family Hope  
Fort Bend County  
Social Services  
Katy Christian  
Ministries  
Rosenberg-Richmond  
Helping Hands  
Second Mile Mission

## Mental/Behavioral Health

Houston Galveston  
Institute  
Fort Bend Regional  
Council on  
Substance Abuse  
Texana Center



# Foundation Grantees Active in Recovery (Cont.)

---

## **Mucking & Gutting**

All Hands Volunteers  
Attack Poverty  
Various church & civic groups have played a major role as volunteers for these efforts.

## **Home Repair & Rebuild**

Attack Poverty  
Fort Bend Habitat for Humanity  
Fort Bend CORPS

## **Specialized Needs/Pops**

Easter Seals of Greater Houston  
Catholic Charities  
Fort Bend Seniors  
Hope for Three  
Texana Center

# Evaluation of Unmet Local Needs

---

- >\$48M in verifiable unmet needs (per FEMA assessments)
- Interim housing (limited available motel/hotel, rental units)
- Repair and reconstruction (limited funding & contractor capacity)
- Long-term housing (especially affordable housing)
- Long-term case management (2+ year recovery process for vulnerable households)
- Mental/behavioral health services (to be determined, as symptoms usually do not manifest until weeks-months post-trauma)

# Contact

---

To learn more, or if your organization is interested in supporting Fort Bend County's Harvey recovery efforts, please contact:

Quynh-Anh McMahan

Grant Officer

The George Foundation

[qmcmahan@thegeorgefoundation.org](mailto:qmcmahan@thegeorgefoundation.org)

281.342.6109