

Texas Child Welfare Funders



Prevention at HHS: Aligning Philanthropy with the HHS Transition

June 10, 2026

Texas Child Welfare Funders



Mission

Engage, inform, and connect Texas funders to advance a system of support that addresses child abuse, neglect, and trauma and promotes healthy children and strong families.

TCWF Steering Committee

Anna-Melissa Cavazos

Melanie Colclough

Amanda Finney

Mark Pollack

Kat Pipoly

Kristy Robinson

Shannan Stavinoha

Shellie Velasco

Michael Martinez (Advisor)



Scan the QR code to learn more!

Texas Child Welfare Funders



Welcome

Crystal Starkey

Deputy Executive Commissioner, Family Health Services

Kathryn Sibley

Associate Commissioner, Family Support Services

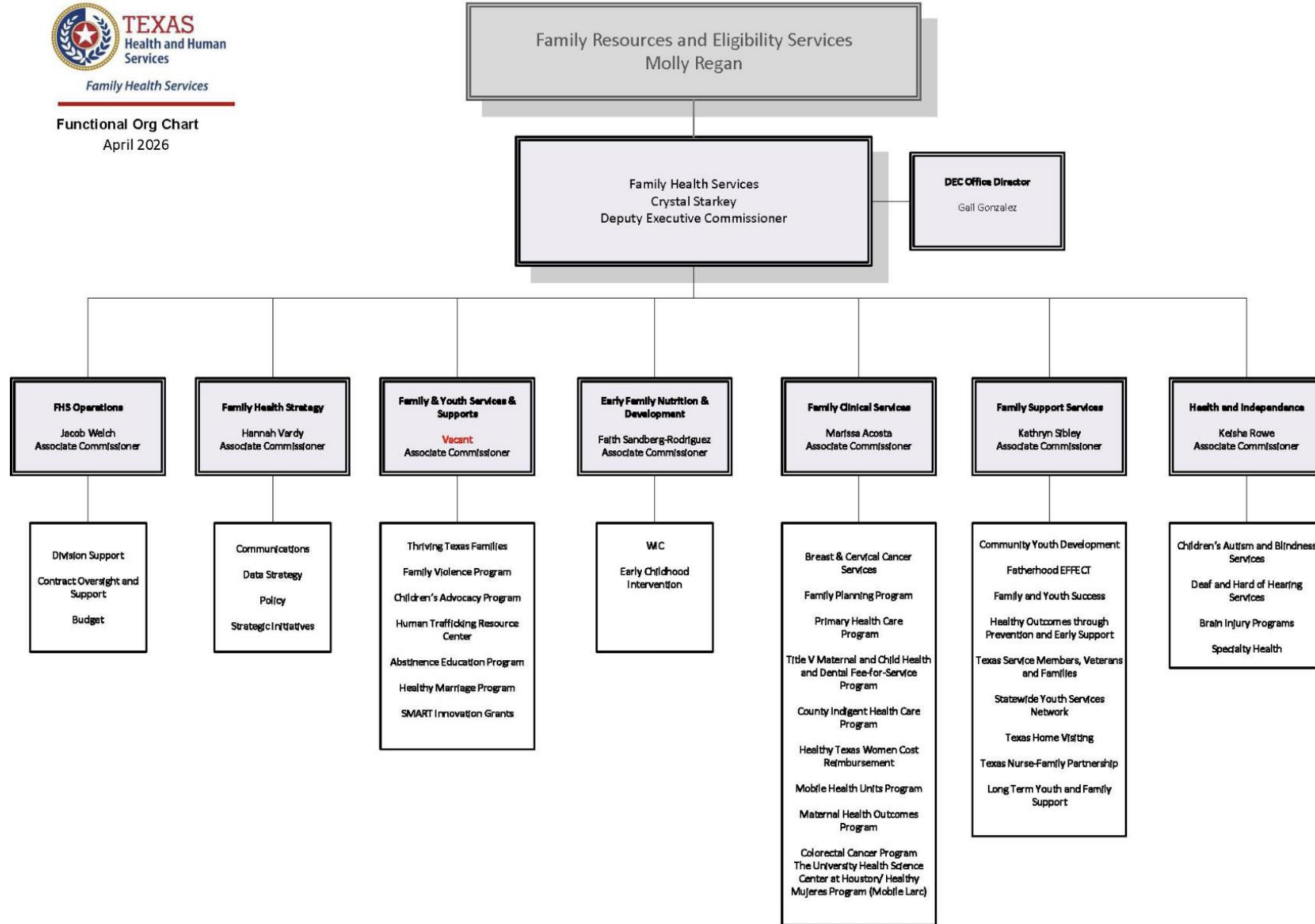
Carol Self, LMSW

Director of Public Policy, Casey Family Programs



TEXAS
Health and Human
Services

Family Health Services



FHS Strategic Framework

Mission

- We support Texas families to lead stronger and healthier lives.

Vision

- To be a trusted community partner that improves the lives of the families we serve.

Core Values

- Accountability and Integrity
- Relationships, Partnerships, and Connection
- Innovation, Strategy, and Forward-Thinking Mindset



TEXAS
Health and Human
Services

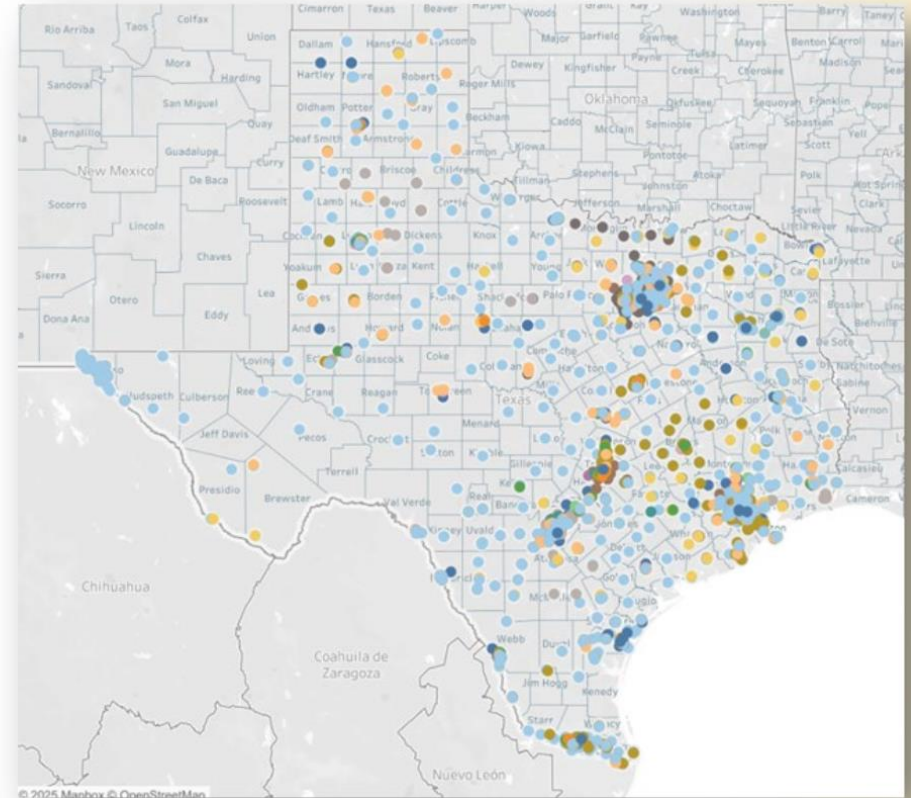
FHS Overview

FHS manages...

- Over 30 programs.
- Over 1000 contracts.
- Over 300 grantees.
- In all 254 counties.



TEXAS
Health and Human
Services



Family Health Services Overview

Family Health Services offers health and social services to meet the needs of Texans in all stages of life. Family Health Services provides:



Services that promote healthy families and communities, including parent education, home visiting, resource navigation, positive youth development programming, and youth and family counseling.



Clinical services, including family planning and breast and cervical cancer services, and primary health and dental care for children and pregnant women.



Social and safety support services, including support for pregnant women and young families, and survivors of child abuse, family violence and human trafficking.



Support for young children and families, including nutrition through the Special Supplemental Nutrition Program for Women, Infants, and Children (WIC), and services for young children with disabilities through Early Childhood Intervention.



Provides specialized services through community-based supports and direct service delivery for people with disabilities or specialty health needs — including blindness, brain injury, deafness and hard of hearing — and access to health care and benefits for Texans with specific diagnoses.



TEXAS
Health and Human
Services

Future of Family Health Services

- FHS strategic plan
- Improving data-driven decision-making, including through:
 - 📍 Mapping services and layering with population health data
 - 🔗 Integrated Continuum of Care Analytics data system
 - 📊 Creating standardization in outcome metrics across FHS programs where possible
- Developing an integrated system of supports for families



TEXAS
Health and Human
Services

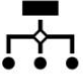



Senate Bill 24

- Senate Bill 24, 88th Legislative Session, Integration Statute:
 - ▶ Section 137.003(a)(2) of the Texas Human Resources Code directs the Health and Human Services Commission (HHSC) to plan, develop, and administer an integrated continuum of care system of programs designed to provide family support services to at-risk families.



TEXAS
Health and Human
Services

Integration from a Practical Perspective

-  Realigning programs into a more effective structure.
-  Improving data-driven decision-making.
-  Evaluating internal processes.
-  Incentivizing collaboration and relationship building.



TEXAS
Health and Human
Services

Integrated System



Client-centered



Highly collaborative



Outcomes-focused



Easy to navigate



Efficient



TEXAS
Health and Human
Services

Family Support Services Programs

**With
Young
Children**

Healthy Outcomes through Prevention and Early Support (HOPES)

Texas Home Visiting (THV)

Texas Nurse Family Partnership (TNFP)

**With
Youth**

Community Youth Development (CYD)

Statewide Youth Services Network (SYSN)

Long-Term Youth and Family Support (LTYFS)

**With
Children
of All
Ages**

Family and Youth Success (FAYS)

Service Members, Veterans and Families (SMVF)

Fatherhood EFFECT

Community Services Grant (CSG)



TEXAS
Health and Human
Services

Strategic Plan Requirements: Human Resources Code, Section 137.005

The statutory requirements for the strategic plan can be broken down into three buckets:

Providing services and programs to meet the needs of underserved populations and geographic areas.

Coordinating within HHSC, with other state agencies, and communities and stakeholders to provide family support services.

Measuring program effectiveness and progress toward the plan's goals.



Strategic Plan Goals

Goal 1: Increase coordination to improve services to at-risk families.

Goal 2: Develop responsive Family Support Services programs.

Goal 3: Provide effective oversight and support of grant programs.



TEXAS
Health and Human
Services

Intersection with Casey Family

- Lessons learned from other states re: system thinking and system improvement for family supports and services.
- Tools used by other states for coordinated intake, referrals and services.
- Leverage mandatory supporting efforts across community family and individual serving programs
- Considerations of ways to help:
 - ▶ Assistance with community readiness
 - ▶ Support of one-stop shop for families (like Family Resource Centers)
 - ▶ Overhead costs for smaller community service providers



TEXAS
Health and Human
Services



Public Policy Engagement in Texas

SAFE STRONG SUPPORTIVE

casey family programs

SAFE CHILDREN STRONG FAMILIES SUPPORTIVE COMMUNITIES SAFE CHILDREN STRONG FAMILIES SUPPORTIVE COMMUNITIES SAFE CHILDREN STRONG FAMILIES SUPPORTIVE COMMUNITIES SAFE CHILDREN STRONG FAMILIES SUPPORTIVE COMMUNITIES SAFE CHILDREN STRONG FAMILIES SUPPORTIVE COMMUNITIES SAFE CHILDREN STRONG FAMILIES SUPPORTIVE COMMUNITIES SAFE CHILDREN STRONG FAMILIES SUPPORTIVE COMMUNITIES

safe children | strong families | supportive communities

Casey Family Programs

“The destiny of all of us is, to a large extent, in the keeping of each of us.” - Jim Casey

Jim Casey, the founder of United Parcel Service, established Casey Family Programs Foundation in 1966 to help improve the safety and success of vulnerable children and their families across America.

Casey Family Programs is the **nation’s largest operating foundation focused on safely reducing the need for foster care**. Our mission is to improve — and ultimately prevent the need for — foster care.

Casey Family Programs works in all 50 states, the District of Columbia, two U.S. territories and with numerous tribal nations to influence long-lasting improvements to the safety and success of children and families.

Building Communities of Hope

Communities of Hope is Casey Family Programs' overarching nationwide vision and theory of change. The core reasons for establishing this framework include:

- Addressing ZIP Code Disparities:** Casey recognizes that a child's success shouldn't depend on where they live. The initiative aims to ensure every child, in every home, in every ZIP code has the same access and opportunity to thrive.
- Socioeconomic and Environmental Factors:** Creating better futures is impossible without looking at the broader environmental conditions surrounding families (e.g., housing stability, poverty, safety, and local opportunities).
- The System Cannot Do It Alone:** Traditional child welfare systems are structurally limited. Building Communities of Hope requires a **shared responsibility across five core sectors:**
 - ❖ Government
 - ❖ Business
 - ❖ Nonprofit and Faith-based organizations
 - ❖ Philanthropy
 - ❖ The community members themselves
- Sustainable Transformation:** Ultimately, the goal is long-term transformation, moving away from a system that reacts only after trauma or maltreatment occurs, to a community-wide ecosystem that wraps support around vulnerable families early.

A New Era for Texas Families

The Shift Toward Proactive Well-being

The Shifts

DFPS Transformation

- Community Based Care
- Alternative Response- ensuring that low-risk families receive support without the trauma of an invasive investigation.
- Success in Safe Reductions-Since 2021, Texas has seen a nearly 40% reduction in foster care entries. This trend reflects a major culture shift toward community trust and "front-door" prevention services that keep children safe with kin.

The Shifts

State Legislative Mandates

- New legislation has prioritized **parental rights and child safety** by requiring higher legal standards for family separation. This shifted the focus from reactive removal to proactive family support services.

Well-being Centered

- The current challenge is scaling effective community-based interventions to sustain these reductions while improving overall child and family well-being outcomes across all 254 counties.

The Shifts

Recent Federal Reforms

- Family First Act (FFPSA)
- Supporting America's Children and Families Act (H.R. 9076)
- Home for Every Child
- Fostering the Future

Policy Considerations

- Upstream Prevention and "Community Pathways"
 - Family First Prevention Services Act Implementation
 - Diversion from System Contact
- Prioritizing Kinship Care and Family Connections
 - Kinship Streamlining & Parity
 - Family Finding
 - Guardianship Assistance
- Addressing the Root Causes of System Involvement
 - Economic and Concrete Supports
 - Supportive Housing
- Centering Lived Expertise and Workforce Wellness
 - Power-Sharing with Constituent Voices
 - Organizational Health

What Can We Do?

- Get Involved!!
- Become Familiar with State and Local Organizations and Leaders
- Support Regional Prevention Networks
- Fund Community Driven Collaborations
- Invest in Data Systems for Tracking Outcomes

Alignment With State Initiatives

- Support the "Healthy Outcomes through Prevention and Early Support" grant by funding auxiliary services that go beyond state-reimbursed items
- Expand reach into counties currently not covered by state-funded home visiting initiatives like Nurse-Family Partnership
- Align with the state efforts to ensure health equity and early developmental supports for the state's youngest residents
- Co-invest in evidence-based programs (EBPs) required for federal reimbursement, helping providers meet the rigorous standards of the Title IV-E Prevention Services Clearinghouse
- Invest in programs designed to strengthen Kinship Care
- Support Initiatives aimed at bolstering quality legal representation and pre-petition legal representation

Texas Child Welfare Funders



Questions

Crystal Starkey

Crystal.starkey@hhs.Texas.gov

Kathryn Sibley

Associate Commissioner, Family Support Services

Kathryn.Sibley@hhs.Texas.gov

Carol Self, LMSW

Director of Public Policy, Casey Family Programs

Cself@casey.org

Texas Child Welfare Funders



**Thank you to our wonderful speakers
and attendees!**

**We want to hear from you! Are there
any topics you would like us to
explore in the future?**

TCWF Steering Committee

Anna-Melissa Cavazos

Melanie Colclough

Amanda Finney

Mark Pollack

Kat Pipoly

Kristy Robinson

Shannan Stavinoha

Shellie Velasco

Michael Martinez (Advisor)



Scan the QR code to learn more!